

BREAKFAST TECHSESSIE

Welkom



bekwaam, betrouwbaar, betrokken en persoonlijk

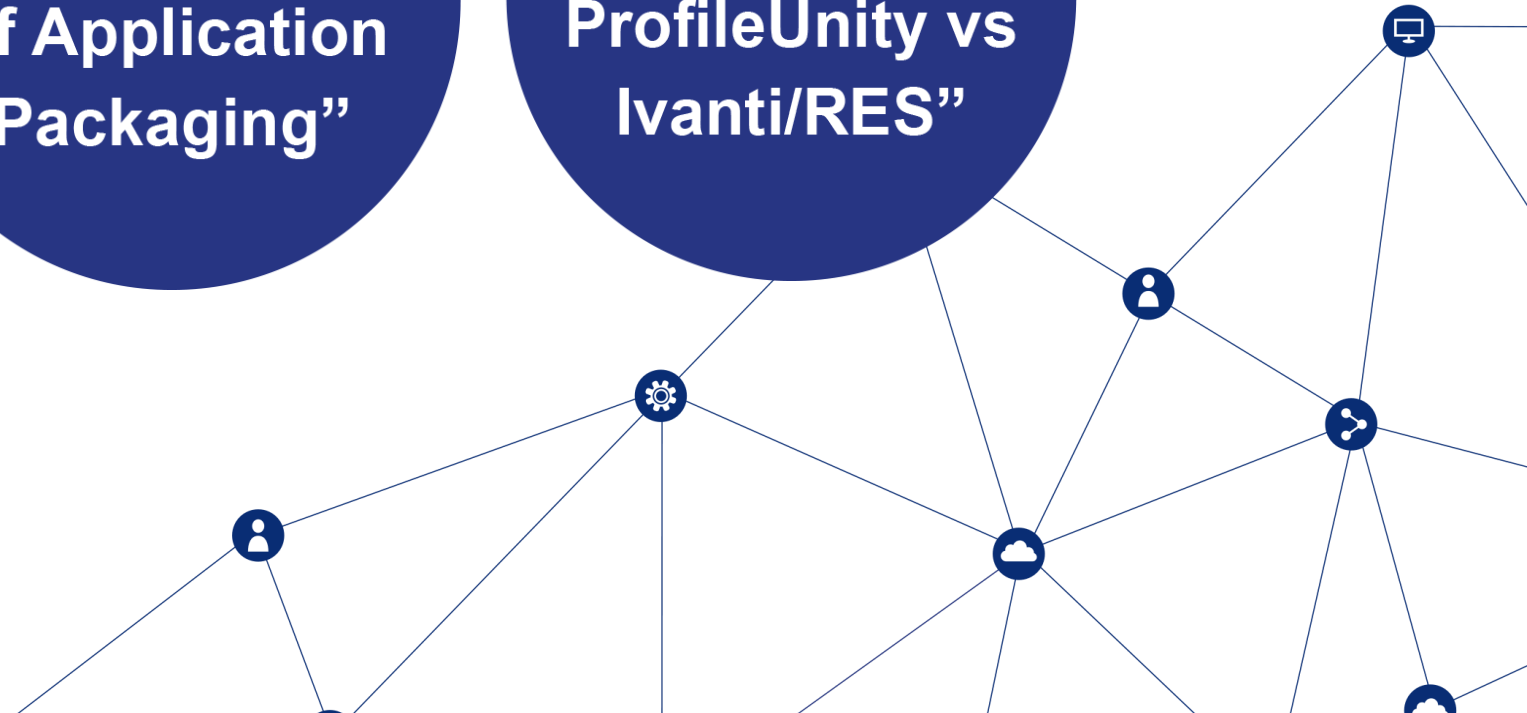


Programma

**Sessie
“Value
propositie ATS
Teconomy”**

**Sessie
“The Future
of Application
Packaging”**

**Sessie
“Liquidware
ProfileUnity vs
Ivanti/RES”**



Value propositie ATS Teconomy

Sessie
“Value
propositie ATS
Teconomy”

Bas Broeren & Hans Belder



bekwaam, betrouwbaar, betrokken en persoonlijk



Positie binnen ATS Global

- 1 of 4 Globale Expert Divisions

- Application Lifecycle Management

- ATS Product Support

- Infrastructuur
 - Deployment
 - Management

- Support IT/OT initiatieven

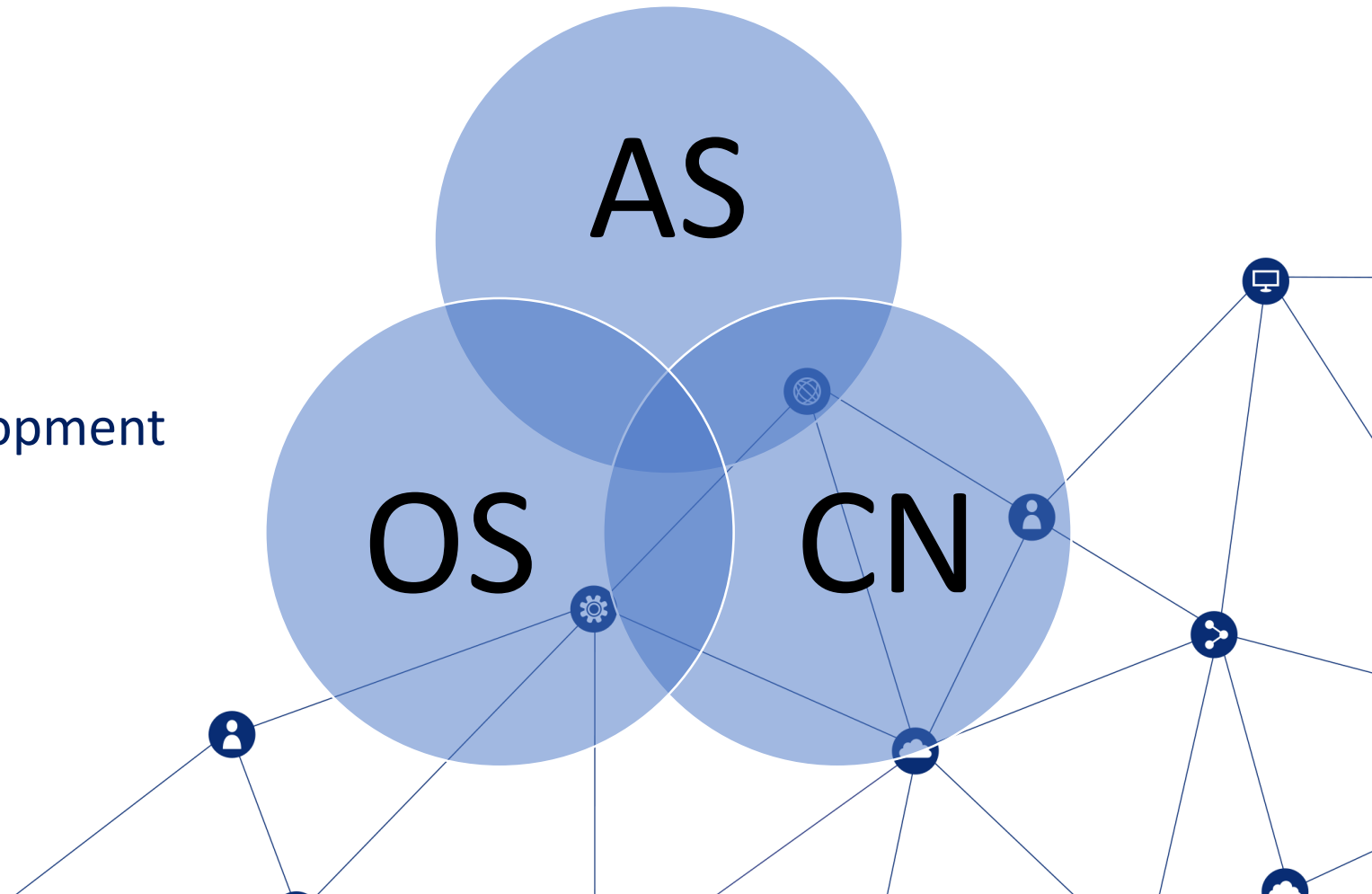
The *Independent* Solution Provider voor Smart Digital Transformation



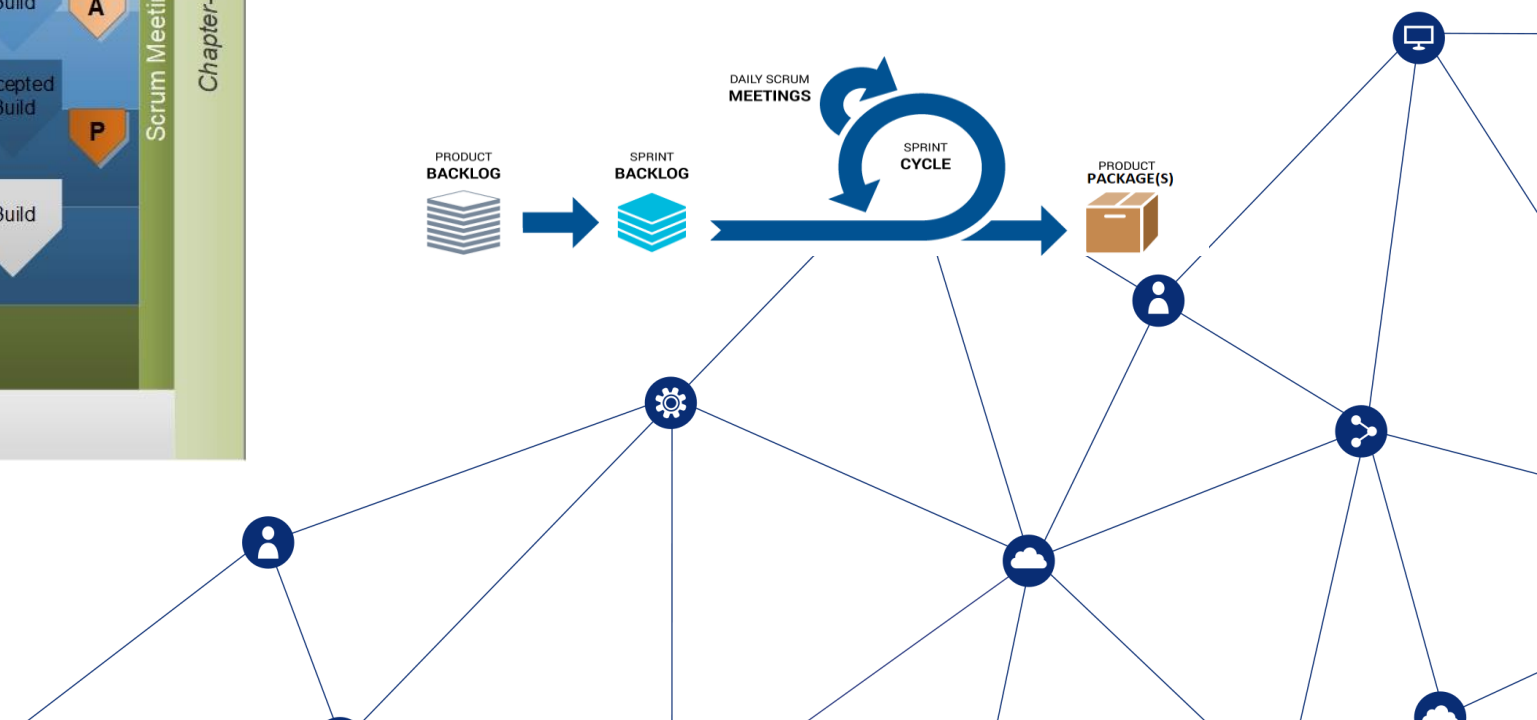
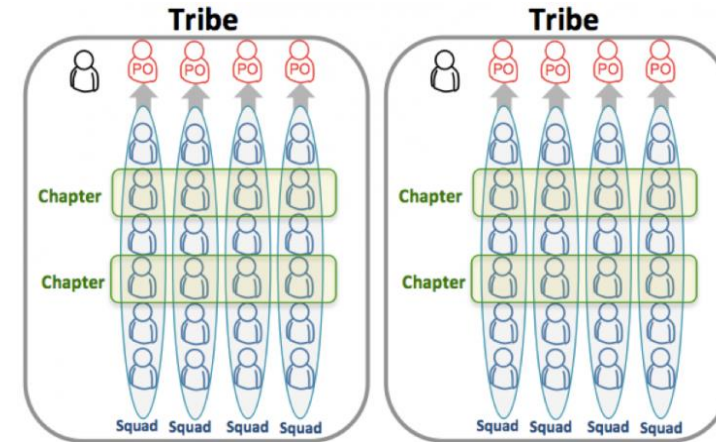
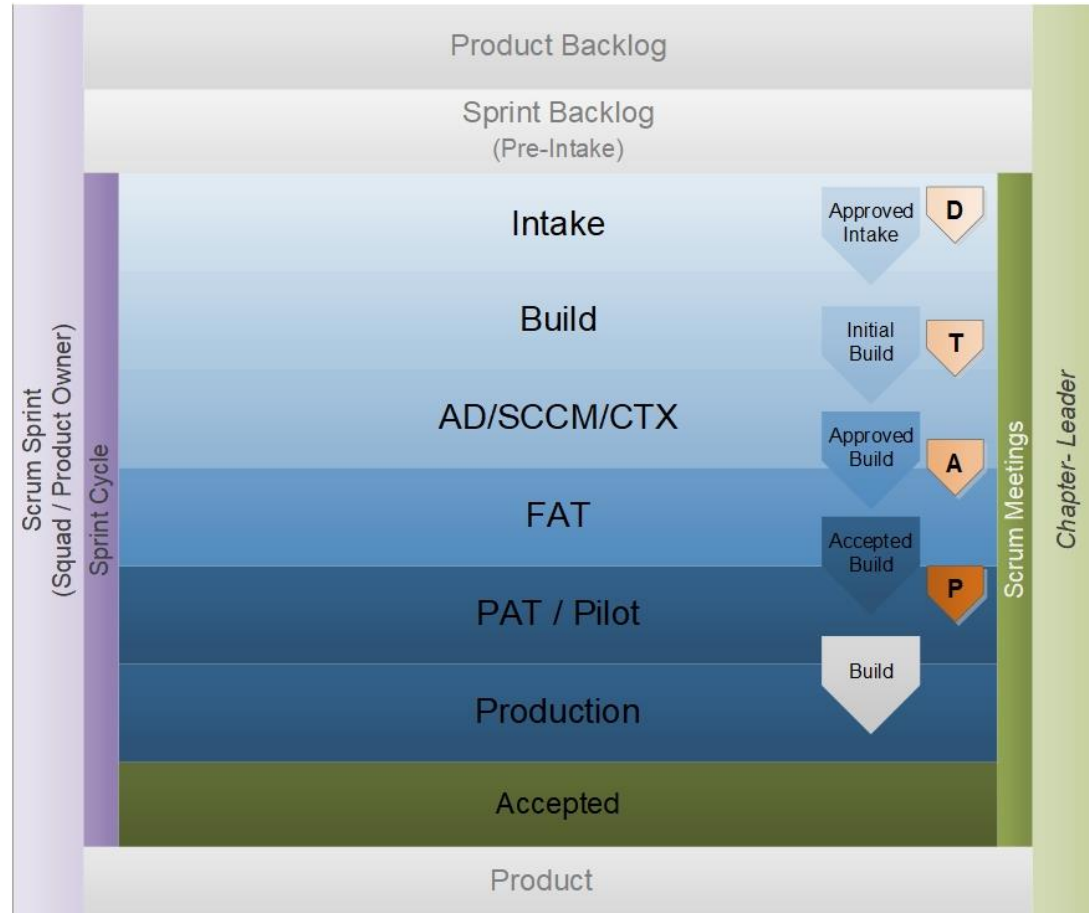
Business Units

Application Services / CloudNXT / On-Site Support

- Medewerkers
 - Employee Experience
 - Groei & ontwikkeling
- Focus
 - Innovatie & product development
 - Business & partners

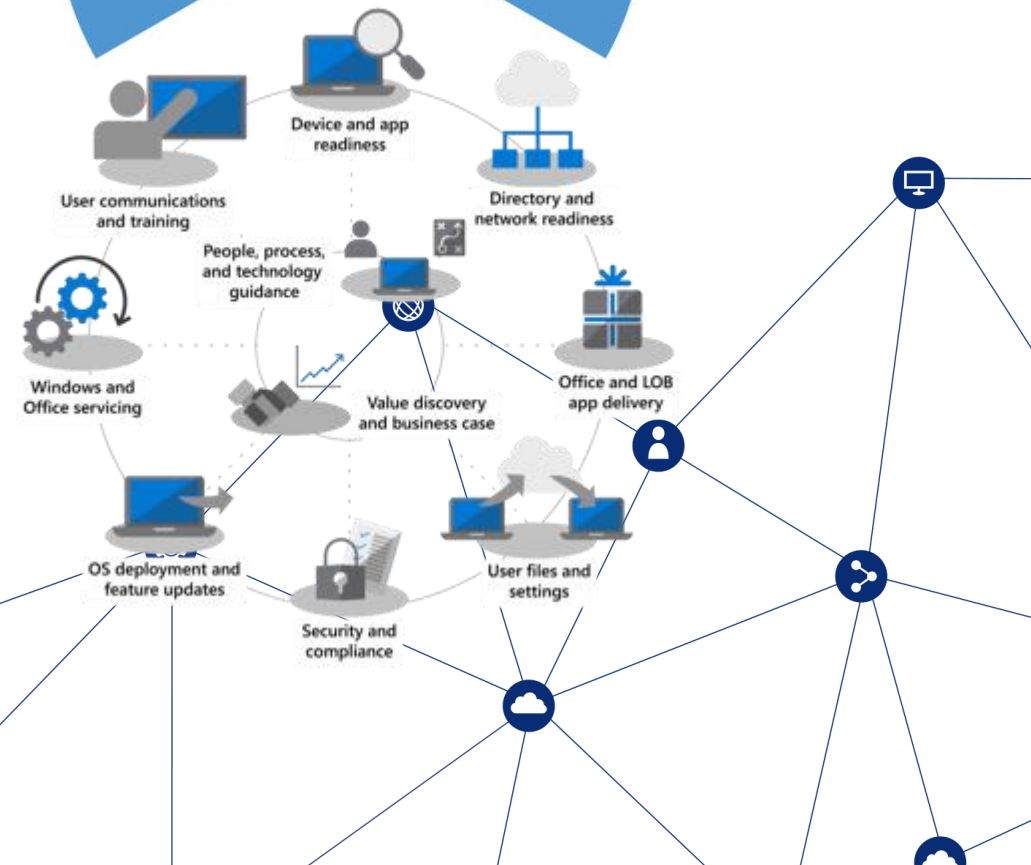


Application Management



ATSTEC 2020+

- Microsoft Modern Desktop Consultant
 - Microsoft 365 Digital Enterprise
- Support IT/OT Integrations
 - Industriële processen <> Kantoorautomatisering
 - IoT & IIoT
- Application 'Lifecycle' Management
 - Waas, Legacy, ATS Products



ATSTEC Showcase

- Demo / Pilot / PoC
 - ATS Teconomy best practices
 - ATS Software
 - Partner products & services
 - Customer needs & wishes
 - IT/OT integrated processes



Personal Invite Q2-2020



Future of Application Packaging

Sessie
“The Future
of Application
Packaging”

Evert Wallenburg

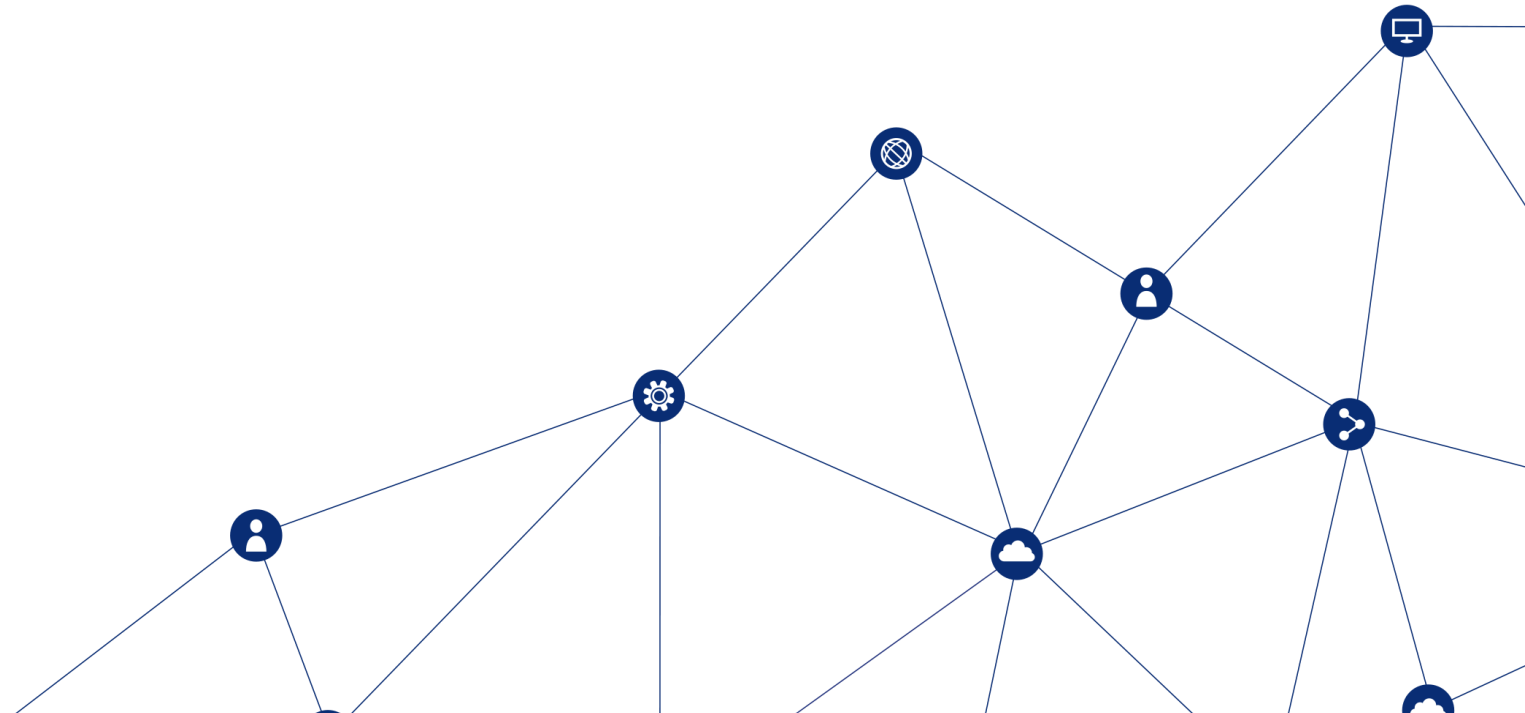


bekwaam, betrouwbaar, betrokken en persoonlijk

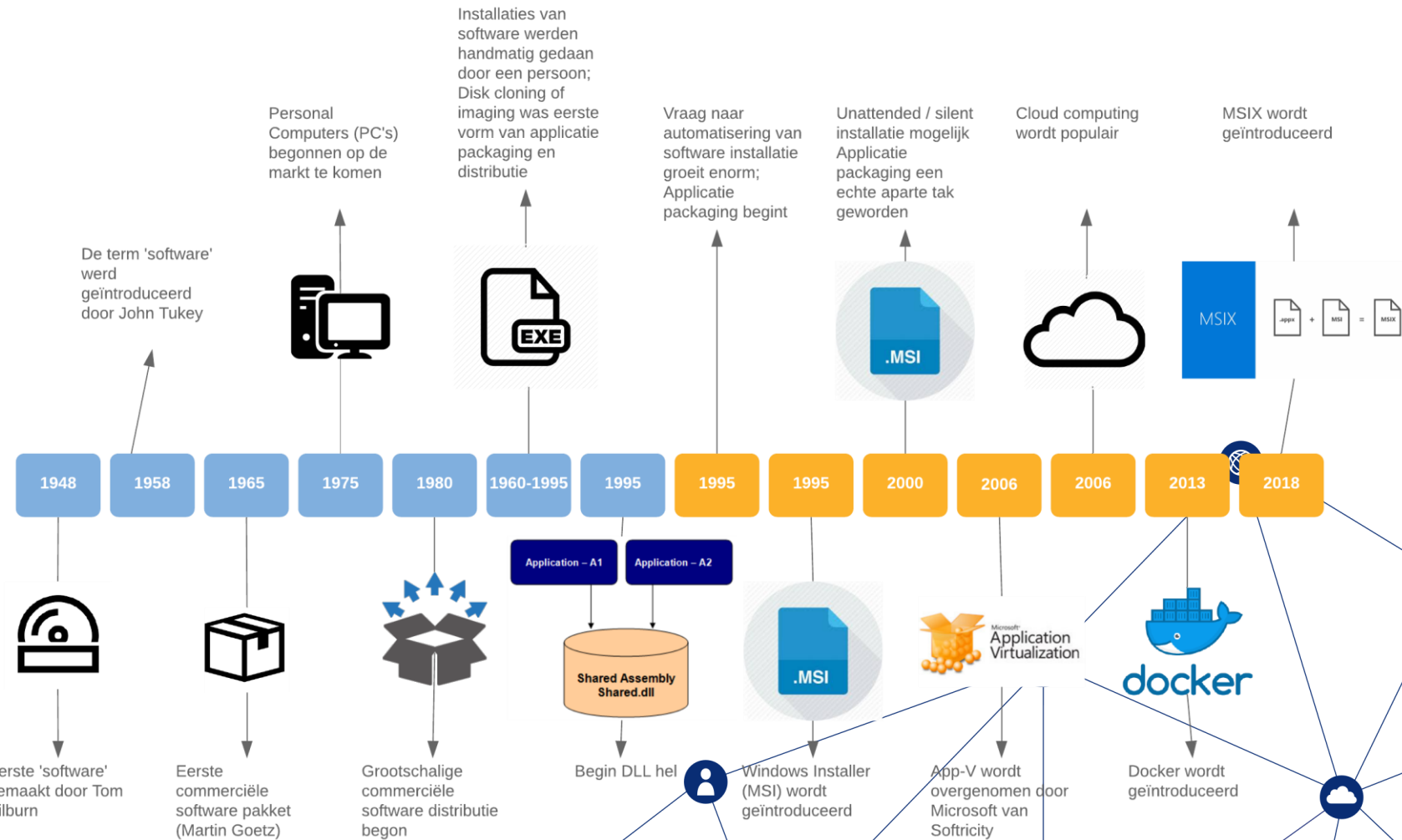


Inleiding

- Afstudeer Scriptie Software Developer
- Packaging is het geschikt maken van applicaties voor de klant en distributie. Het is een specialisme dat ontstaan is vanuit de behoefte om applicaties automatisch te kunnen installeren.

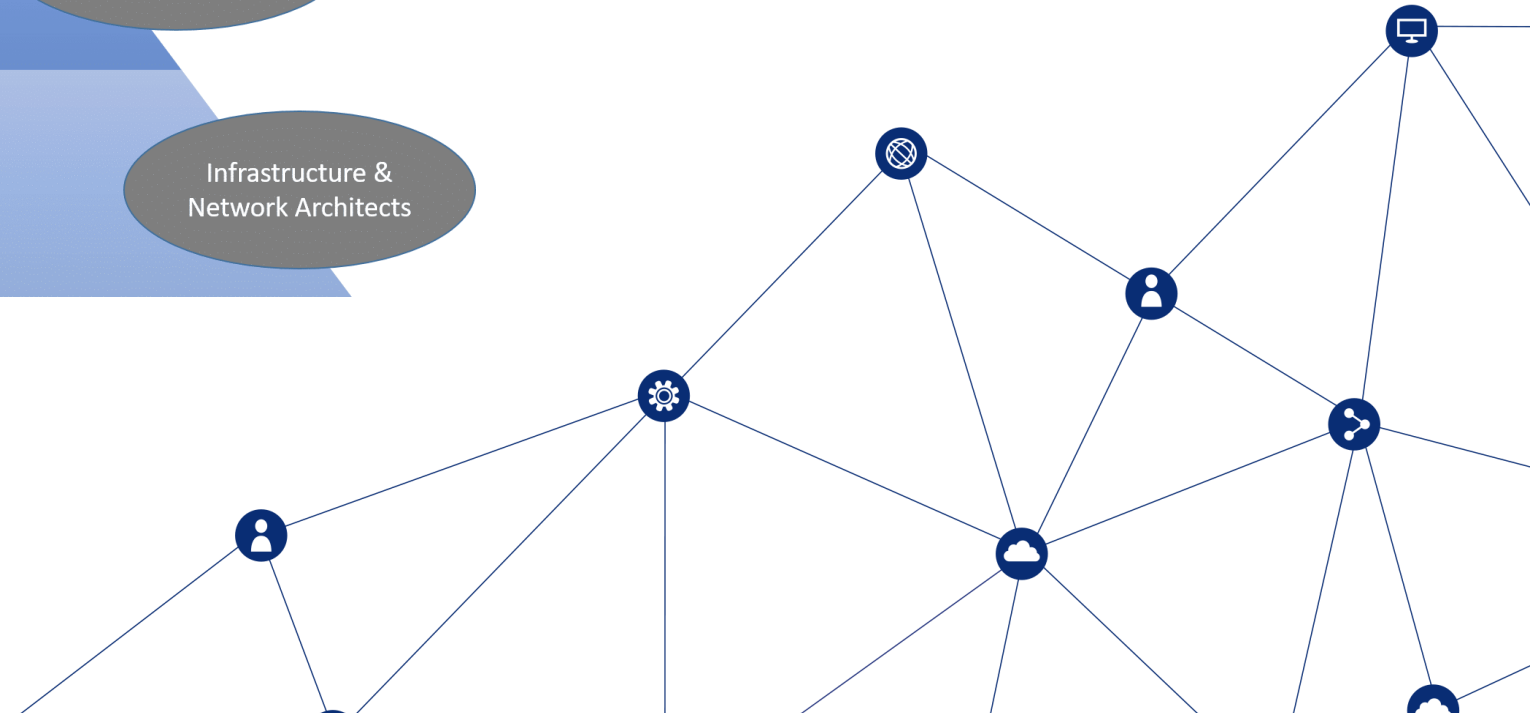
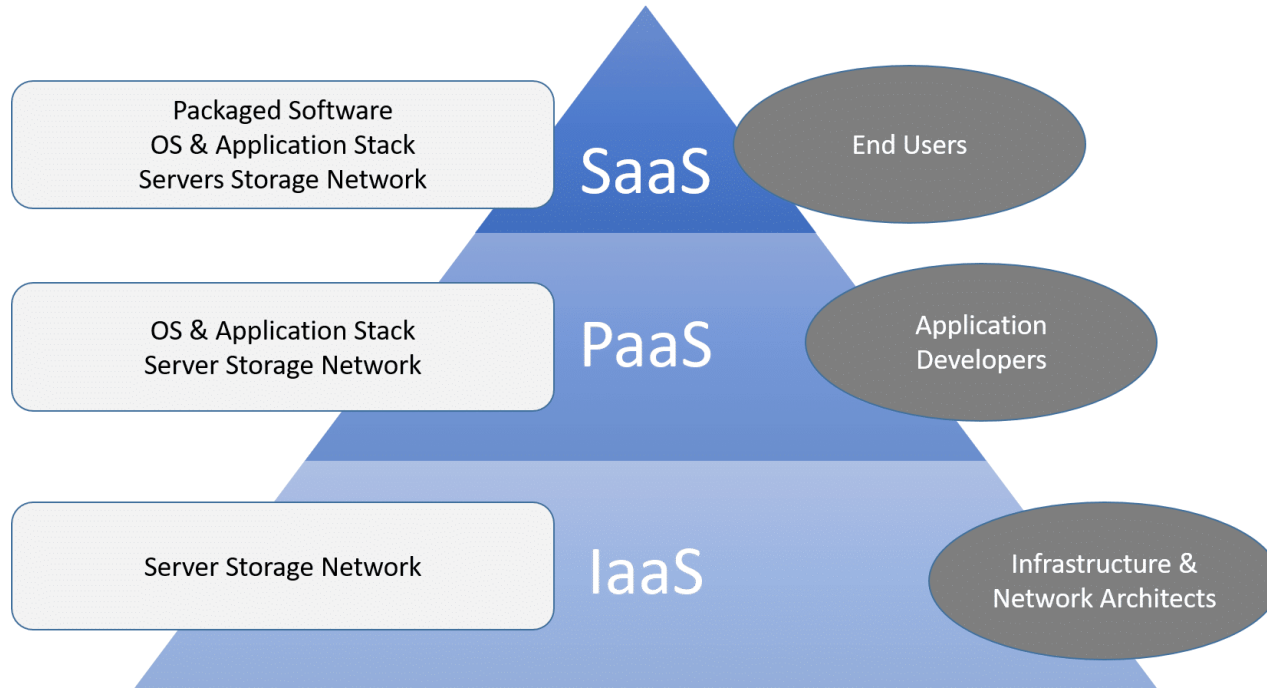


Geschiedenis software ontwikkeling, packaging & distributie

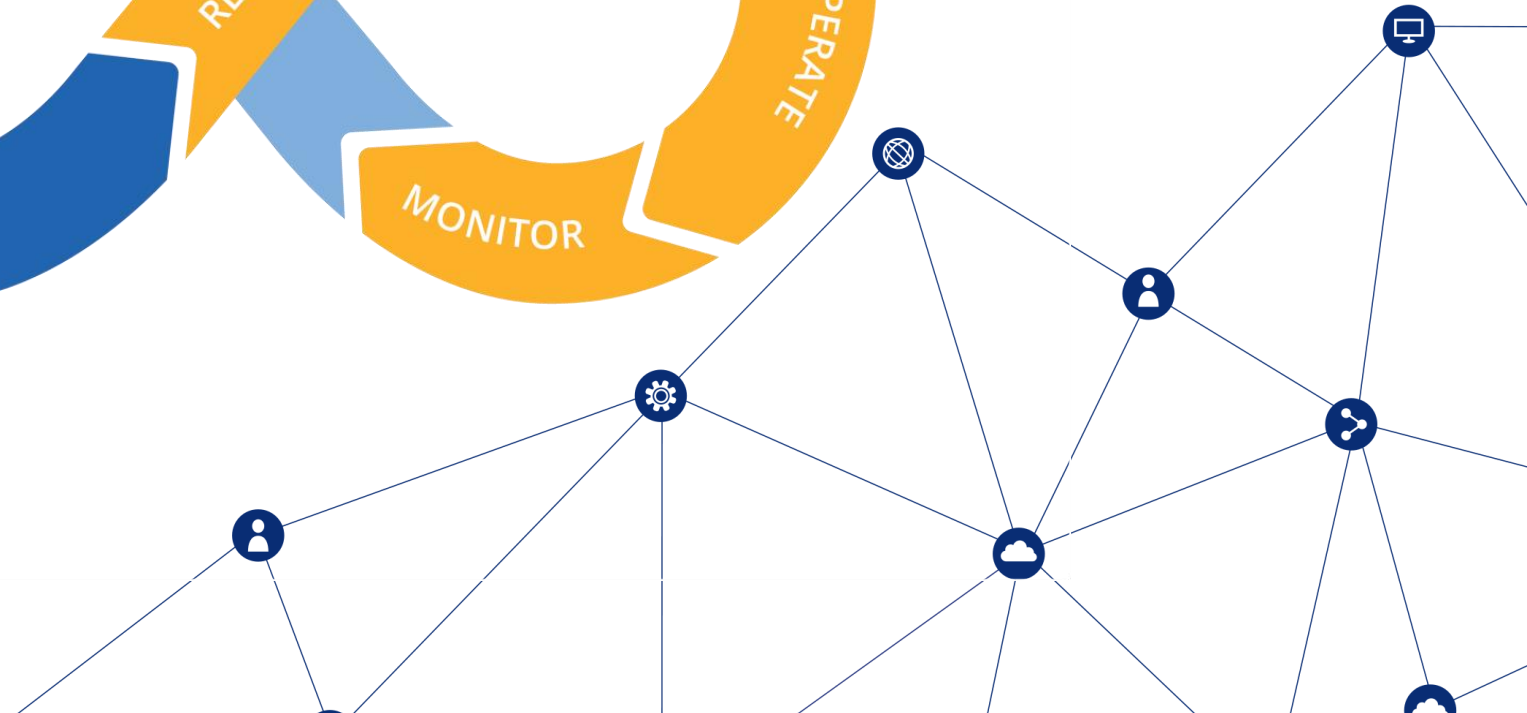
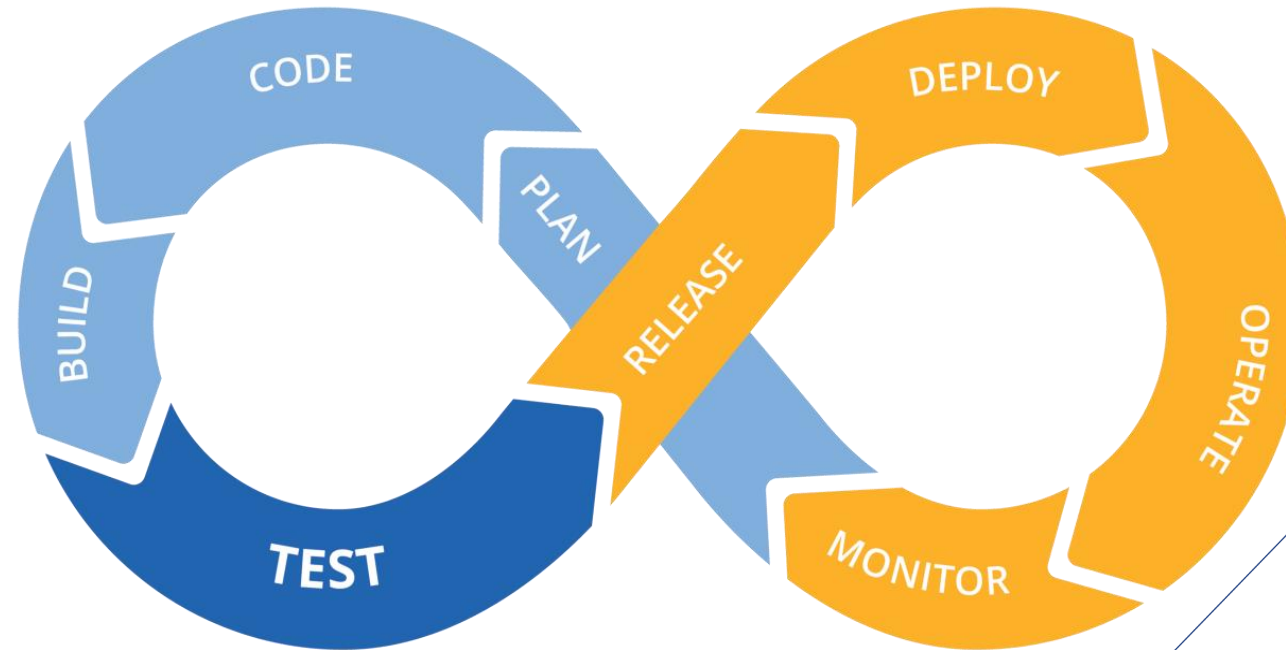


Heden - Cloud

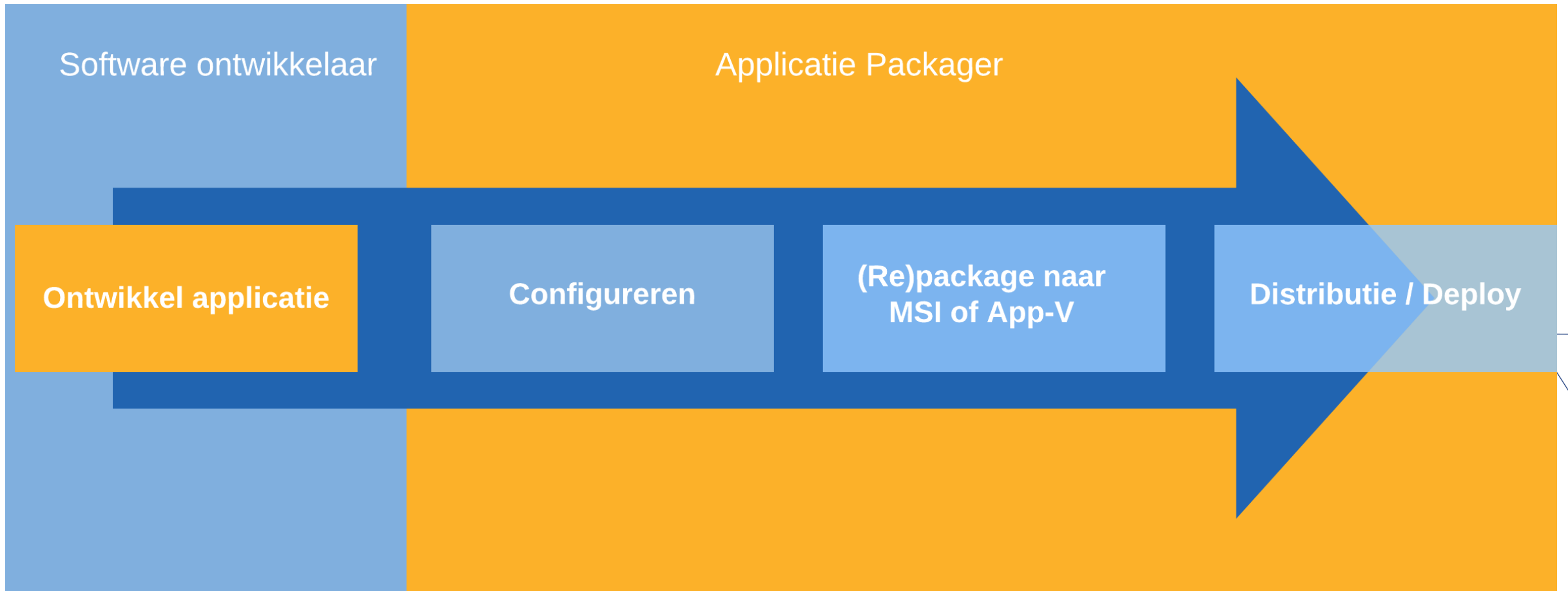
Cloud Service Models



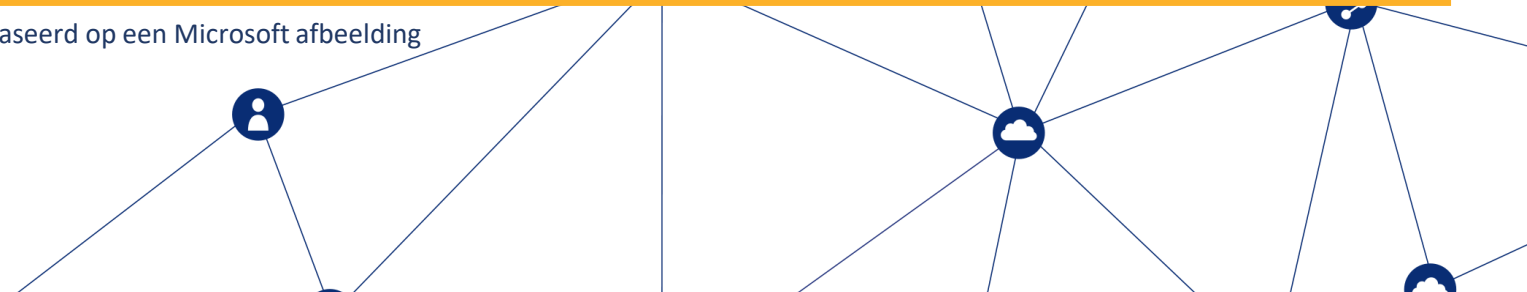
Heden - Kortere iteraties software ontwikkeling, testen en distributie



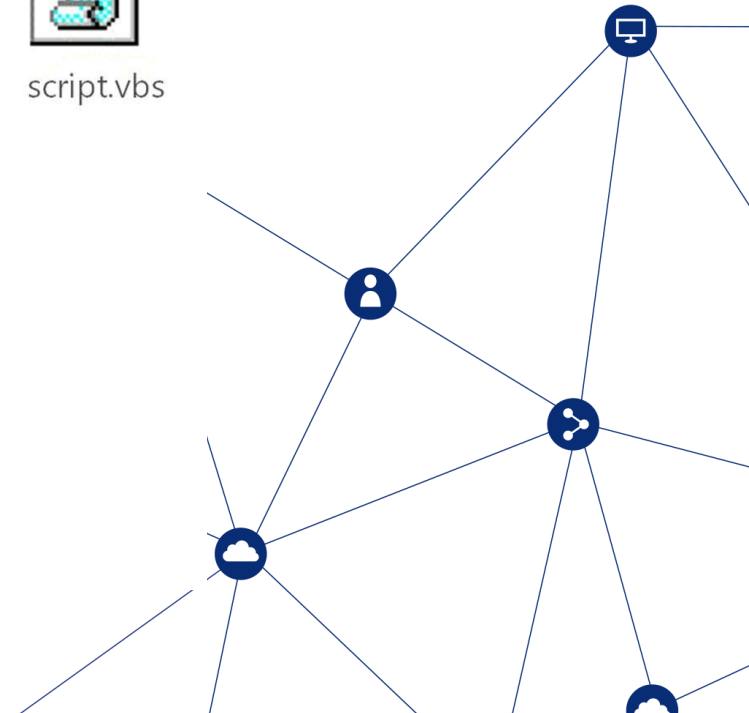
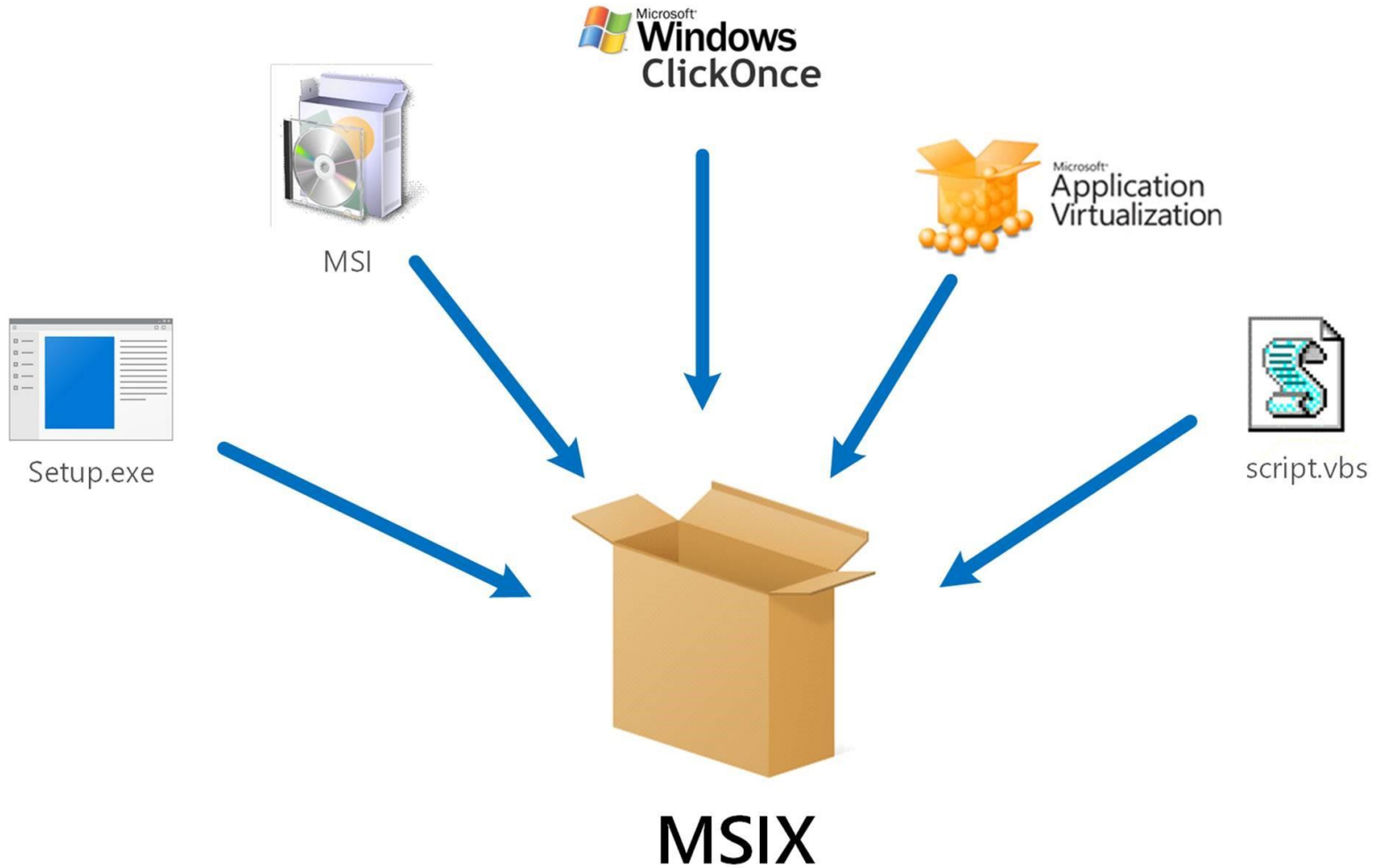
Applicatie Lifecycle in het heden



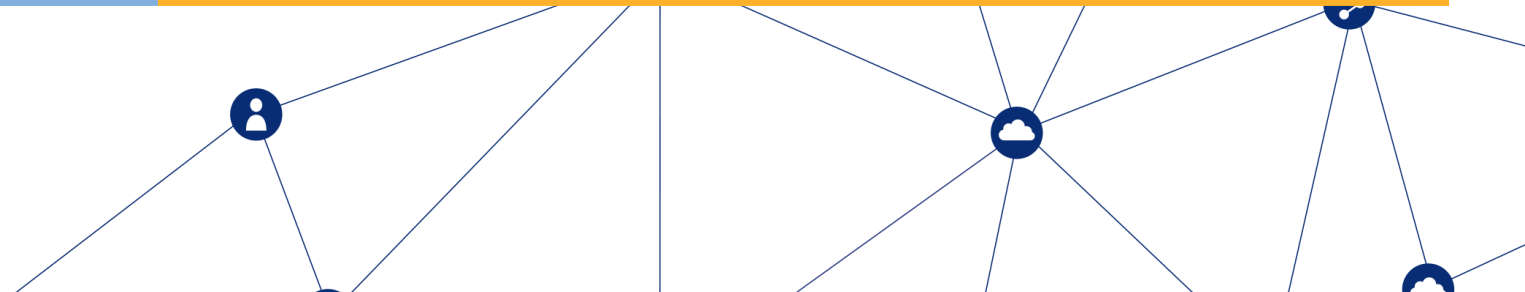
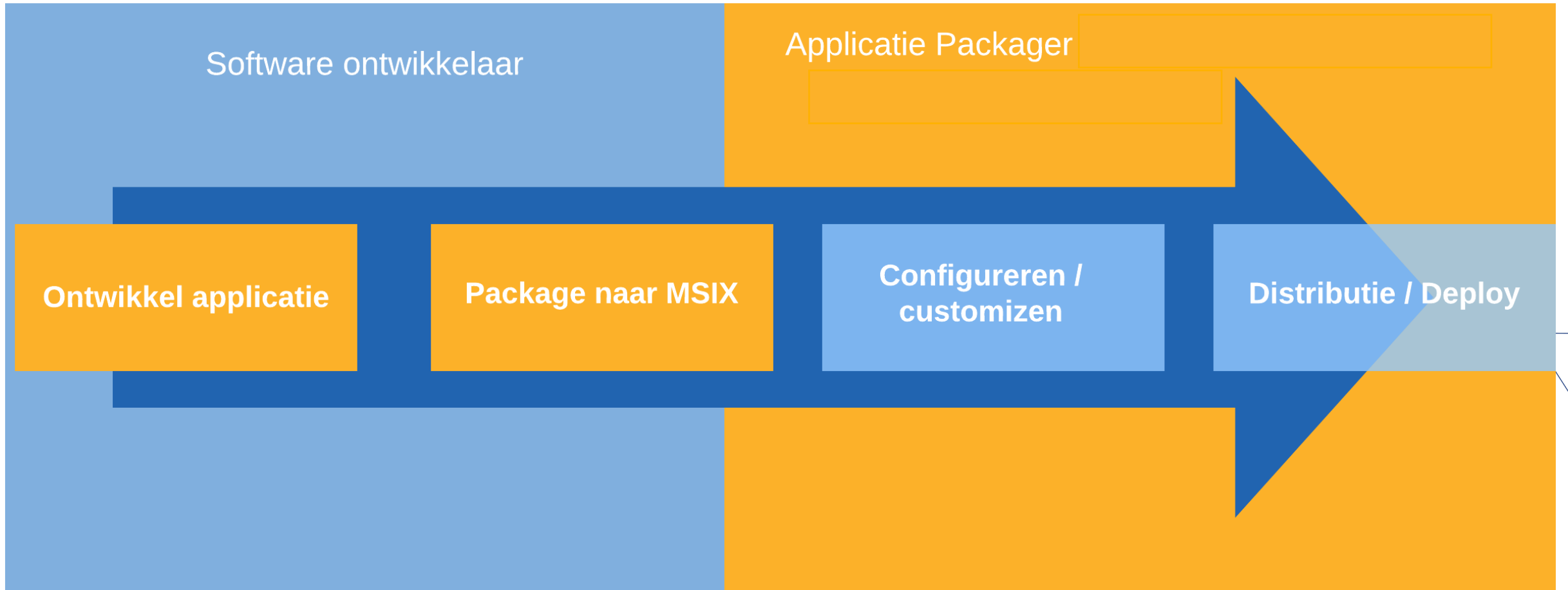
Bron: Eigen afbeelding gebaseerd op een Microsoft afbeelding



Toekomst op de korte termijn



Applicatie Lifecycle in de toekomst



Toekomst op de lange termijn

Software ontwikkelaar



Adoptie MSIX

Ontwikkelaar / Vendor

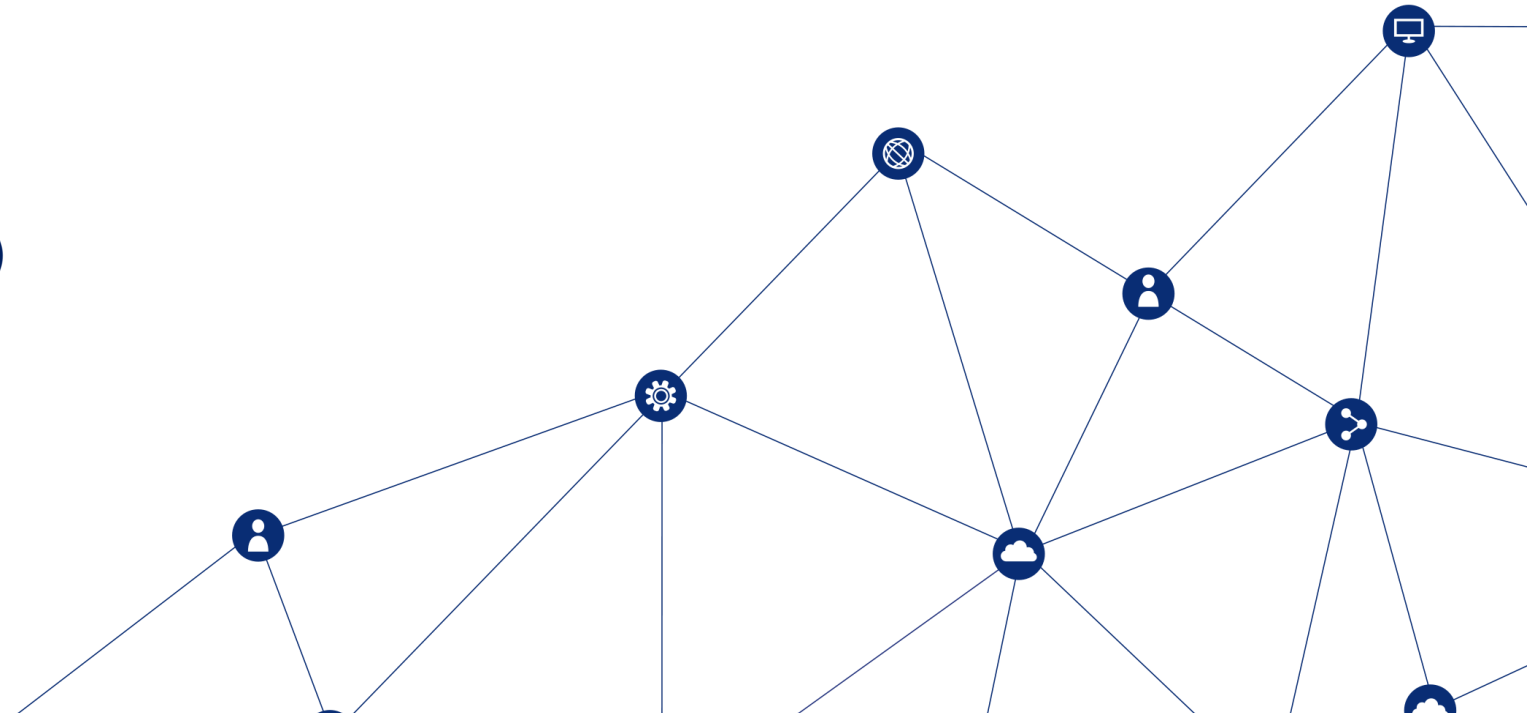
X Scheiding app(licatie) en configuratie in vendor MSIX

Architectuur systemintegrators

✓ Oplossingen voor deployment

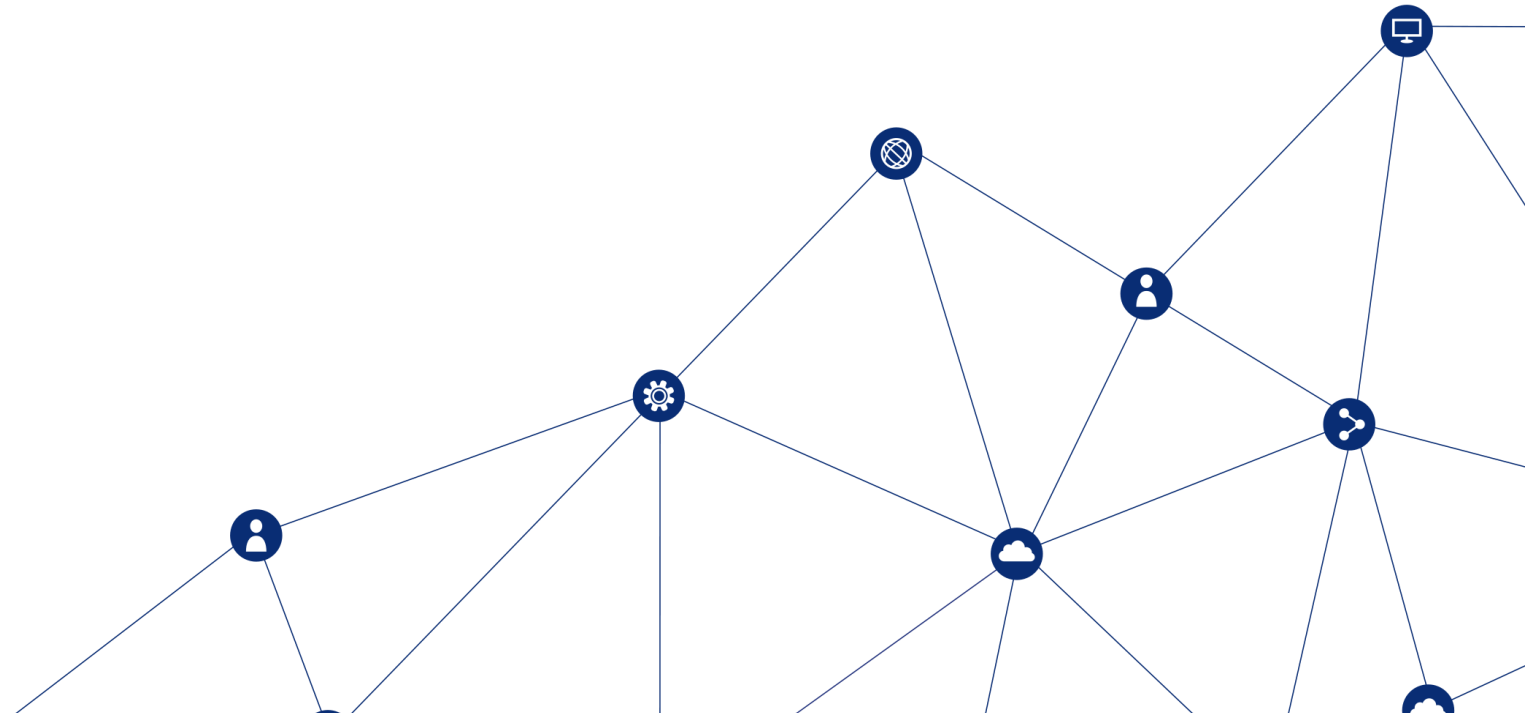
Microsoft

- ✓ Push development platform
- ✓ Push deployment oplossingen
- ✓ Adoptie voor WAAS platform(AppAttach)
- X Integratie divers - ongoing



Conclusie

- Applicatie packaging is een gevolg van tekortkomingen in software ontwikkeling
- Software ontwikkeling maakt applicatie packaging in de toekomst overbodig
- Enterprise configuratie aanpassingen blijven wenselijk en mogelijk



ATSTEC Future Readiness

- ✓ ATS Teconomy Academy (in-house)
 - Microsoft Intune / SCCM / Azure
 - MSIX
- ✓ MSIX geschoolde packagers
- ✓ Gecertificeerde medewerkers
 - Microsoft Modern Desktop (MD-100 & MD-101)
 - Microsoft Azure (AZ-103)
- ✓ Project & Praktijk ervaring
 - ✓ Intune, Azure
 - ✓ MSIX
 - ✓ App-layering

✓ Ready for Microsoft 365!

bekwaam, betrouwbaar, betrokken en persoonlijk



Liquidware

Sessie
“Liquidware
ProfileUnity vs
Ivanti/RES”

Morteza Esteki, Perparim
Bislimi & Kamyar Nezam



bekwaam, betrouwbaar, betrokken en persoonlijk

